



Optinal Swivel Barcket



# AV-QT

## Motion & Glass Detector

### AV-QT Main Features

- Dual Tech Combined PIR & Glass Brake sensors
- Simple tune for each sensor
- Separate Relays for PIR & Glass Detectors
- Save place, instillation time and funds
- Effective alarm detector
- Quad high quality PYRO & Glass sensors
- Option: Supplied with swivel bracket

### Quad Imaging Technology with Pet Immunity

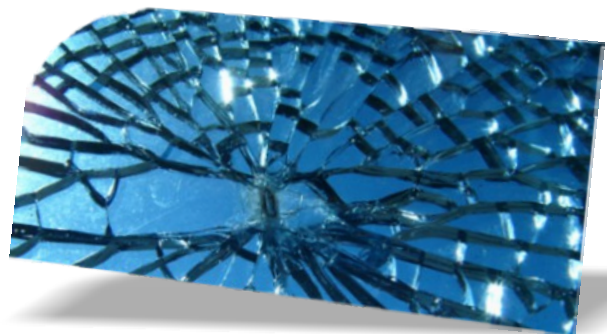
The new AV-Q detectors line use specially designed hard lenses optical with a Quad element PYRO sensor controlled by an advanced ASIC based electronics. The AV-QT features Pet Immunity that can virtually eliminate false alarms caused by small animals and pets up to 25 Kg (55 lbs) in weight.

### Sharpest Detection and Exceptional Stability

The AV-Q detectors provide unprecedented levels of catch performance, immunity against visible light and electrical transients together with exceptional stability for every security application.

Slim Line Housing Design;

The AV-Q line features compact and streamlined housings suited for residential and commercial applications. The housing gives easy access for wiring and great space for terminations.



### Short specifications

Micro ASIC with analog channels  
Automatic temperature compensation  
Tamper switch & Sensitivity trimmers (2)  
PIR range up to 10-12 meters @ 20°C, wide 90 degrees  
Glass brake range 7-10 meters  
Operation voltage 9-16V DC, 16 mA @ standby  
Dimensions: 115 x 61 x 37.5 mm

