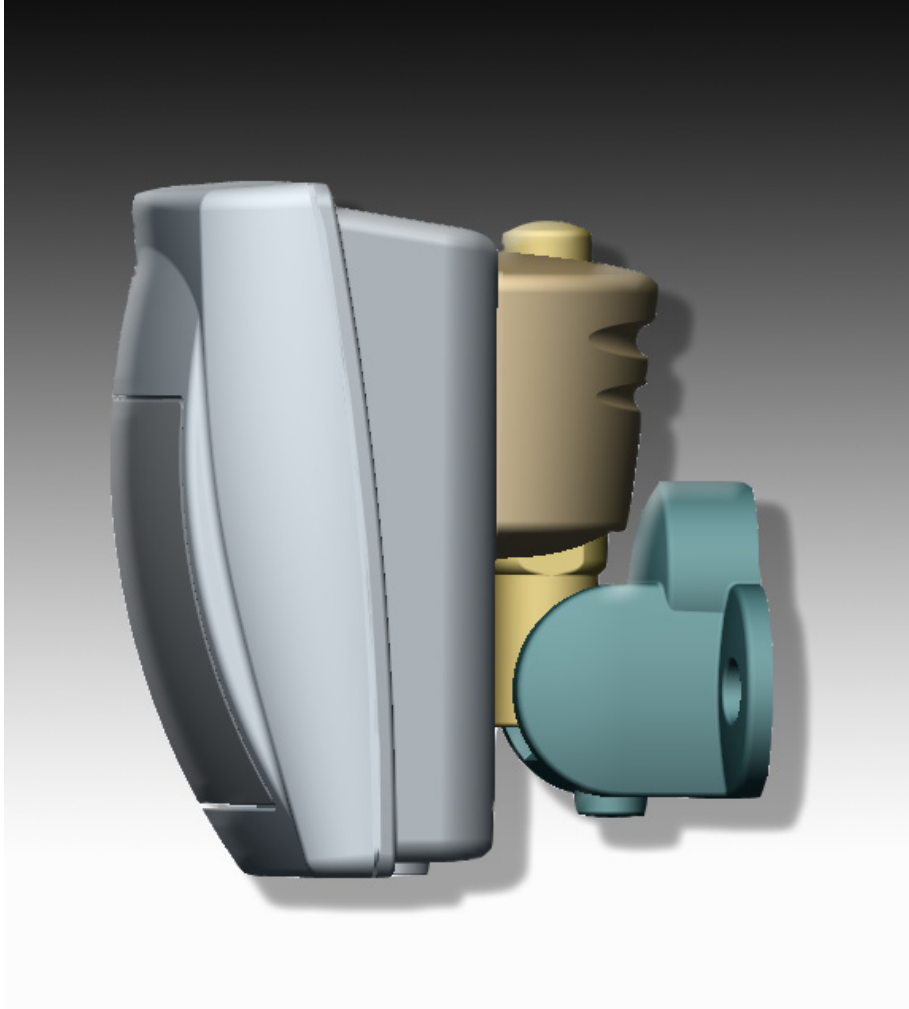


# Eye-Spy™ II



## **Installation Instructions**

Version IV (Built-In EOL mode removed)

- Eye-Spy II – Standard (w/o bracket)
- Eye-Spy II PRO – With bracket
- Eye-Spy II Quad Pet – With bracket
- Eye-Spy II Curtain – (w/o bracket)



## Preliminary Considerations

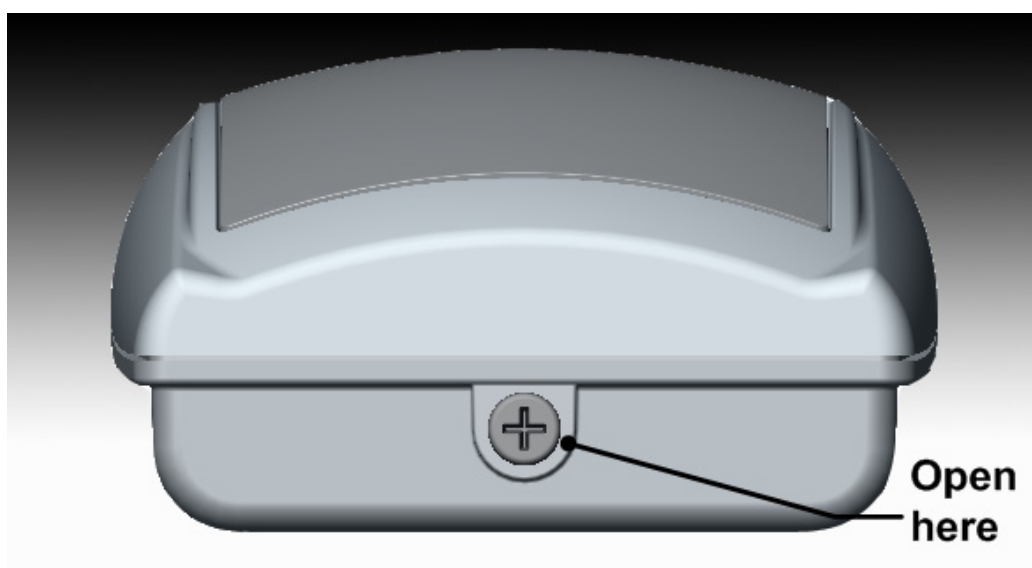
Choose the mounting location after careful consideration of the protected area.

Locate the **Eye-Spy II** in a way that the intruder will cross the infrared beam pattern.

Do not mount the unit in direct sunlight, windy place, near airflow, high voltage lines or close to heat sources.

## Front Cover Removal

Remove the front cover by opening the screw in the slot between the cover and the base at the **Eye-Spy II** bottom.



## Mounting Procedure

Mount the **Eye-Spy II** on a flat wall or corner. Usually corner installation provides optimal coverage.

The **Eye-Spy II** special optics provides optimal covering and range when mounted at 1.60 – 3.30 meter (5 to 12 ft) height. PCB vertical adjustment not required. The highest installed provides larger range, however, the optimal height is 2 to 2.5 meters.

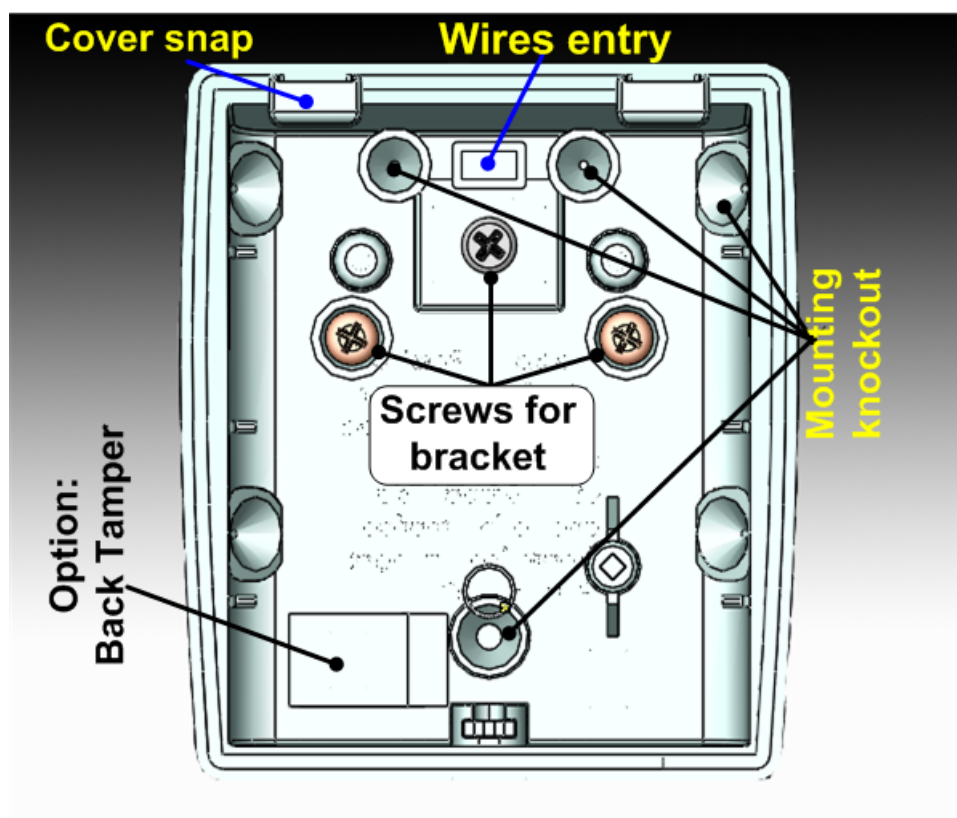


Figure 1: Mounting and wires entry

Punch out the wires entry rectangular knockout in the **Eye-Spy II** base, as shown in figure 1. Insert the cable and attach the base to the wall or corner.

To prevent false alarm caused by insects and air stream, seal the cable entry knockout and holes that are not in use.

### **Mounting With the Swivel Bracket**

The swivel bracket is used for wall mounting only (for ceiling mount, an self-made adapter required).

Punch out the three screws knockout (figure 1) on the **Eye-Spy II** base.

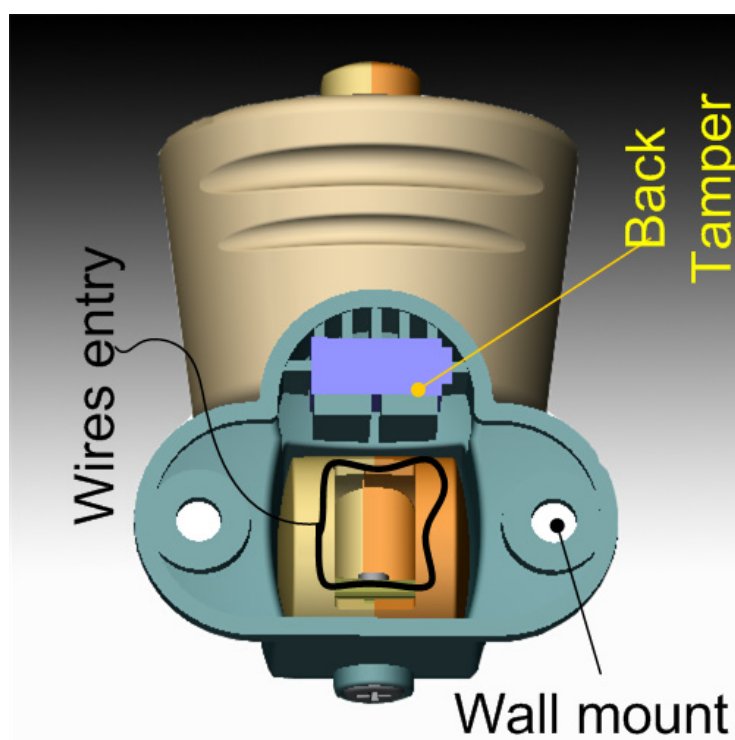


Figure 2: Eye-Spy II bracket (back view)

Insert the cable through the wires entry at the bracket wall base (figure 2).

To pull the cable from the wires outlet (figure 3) use a small pliers.

If a fat cable is used drill a hole in the detector upper-back to avoid the cable insert via swivel bracket channel. Seal this hole after installation.

Install the bracket to wall (after inserting the cable), first remove the Pan Screw from the bracket and tighten this screw from the detector base side. Attach the **Eye-Spy II** base to the swivel bracket with the two supplied locking screws (figure 1, 3).

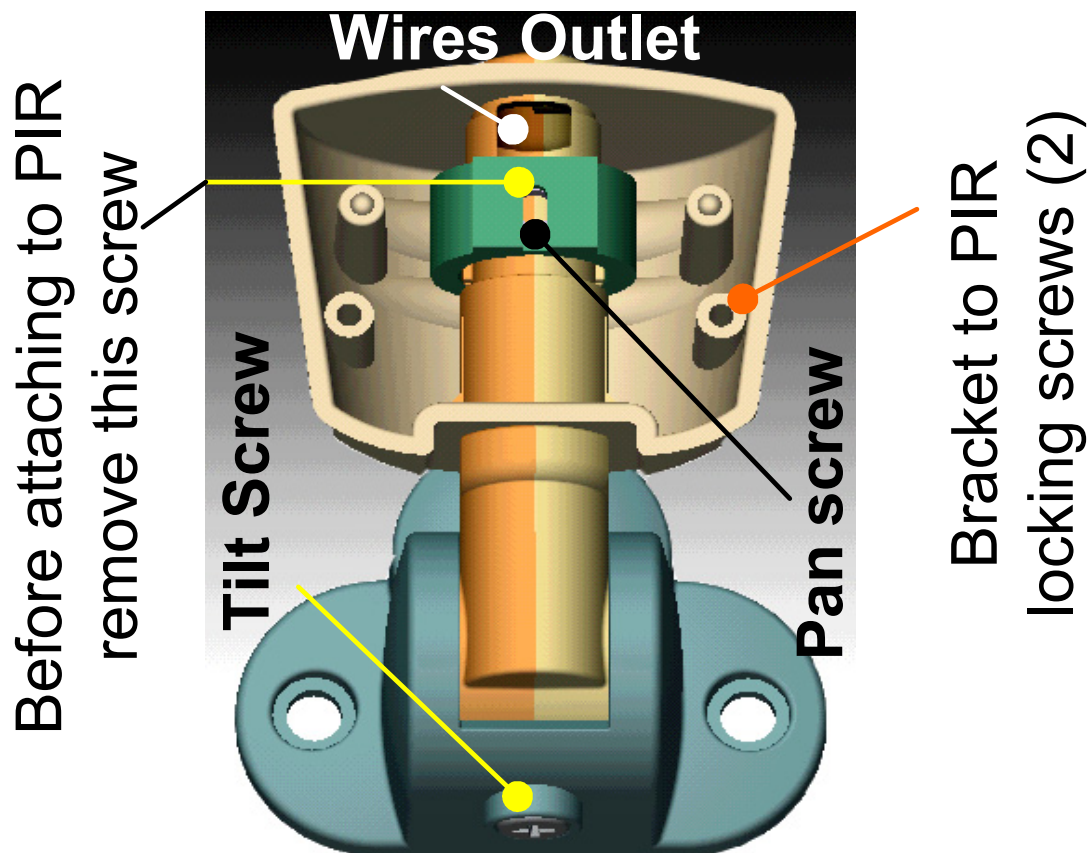


Figure 3: Eye-Spy II bracket

## Terminal Connections

Wire the cable to the terminal block at the PIR board as shown in figure 4. Wire the Tamper switch to a separate zone, programmed at alarm panel as tamper or 24H type.

**12V DC:** Power supply inputs

**ALARM:** N.C. contact MOS relay

**TAMPER:** N.C. dry contact switch

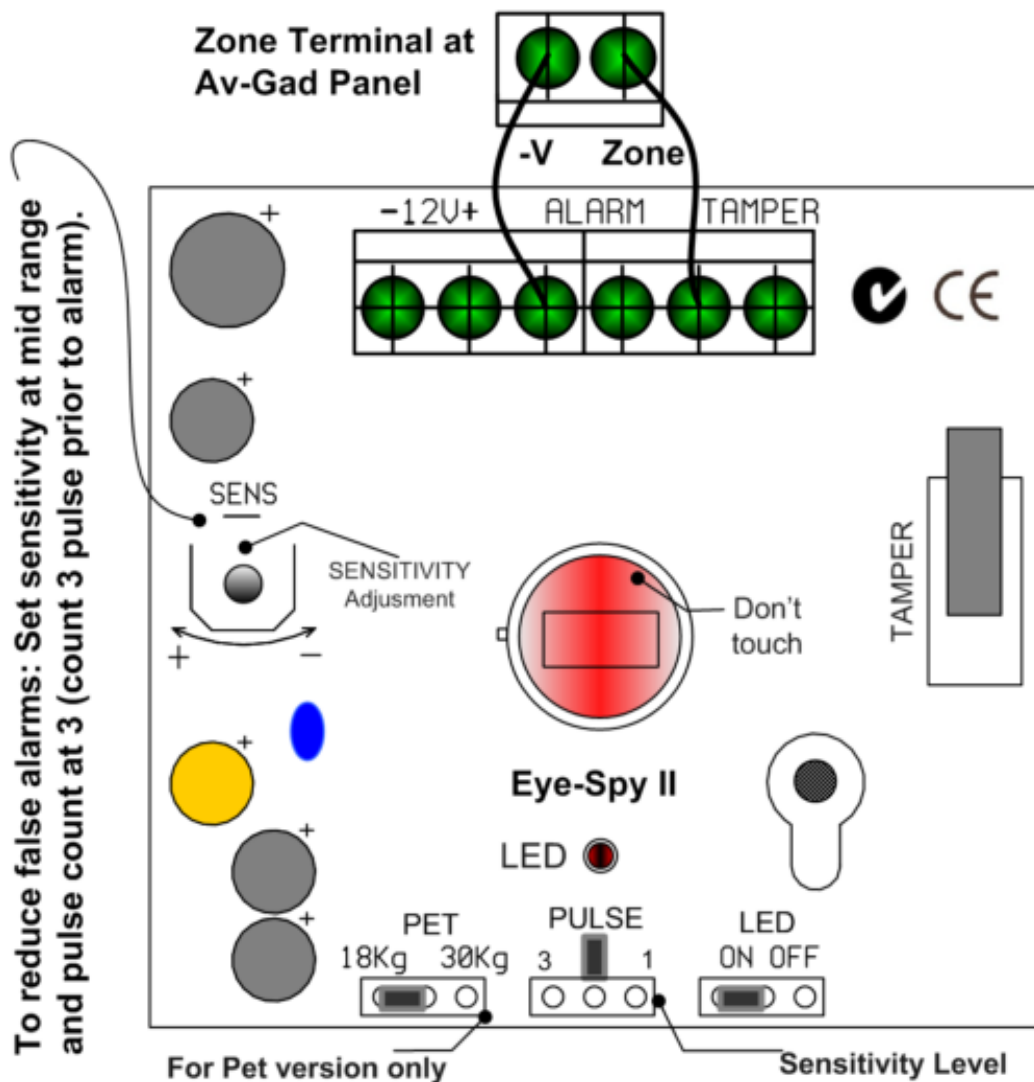


Figure 4: Eye-Spy II PCB layout

## **Printed Circuit Board (PCB) Adjustments**

Before closing the front cover make sure to tighten the PC Board holding screw.

### **QUAD PET TYPE:**

Typical mounting height: 2.2 meter (7 ft).

Select the required PET mode; 18 (40 lb) or 30 kg (66 lb), refer to figure 3. It's recommended to install the PIR with the bracket in 5 degrees vertical slop. The Quad Pet is useful at the most hostile environment.

Avoid installing the Pet PIR in front to stairway or furniture, for preventing the pet to jump in front of the detector and cause false alarm.

### **CURTAIN TYPE:**

Typical mounting height: Top of the protected window or entry. The Curtain type is "blind" on side patterns.

The Curtain PIR application is bedrooms or other areas where protection is required when people are inside the protected area.

Do a walk test (described in this manual) and readjust sensitivity and pulse count as necessary until a desired coverage pattern is reached.

It's recommended to set the Pulse jumper at 3.

## **Jumpers Setting (pull to remove)**

### **LED:**

To disable the LED indication, move the LED jumper to OFF.

### **PULSE:**

Set the PULSE jumper in position 1 or 3, corresponding to the desired pulse count. Highest sensitivity is at position 1. Position 3 is recommended to prevent false alarms (lower sensitivity). Factory default is no pulse count.

### **EOL MODE (Jumper Settings):**

Starting Sep. 2006 the EOL option removed.

### **PET MODE (Eye-Spy II Quad PET only):**

Quad Pet is recommended for harsh indoor areas and sites with Pets. Pet jump towards the PIR may cause alarm.

Set the PET jumper in position 18 for small pet, set at 30 kg for bigger pet, not higher than 70 cm. Factory default is 18 kg.



## Walk Test

Replace the front cover during the walk test. Apply power and wait at least two minutes for the detector to stabilize.

The LED is viewed through the detector lens.

Walk through the entire protected area and observe the LED to confirm full coverage. If the swivel is used, adjust it when necessary.

To prevent false alarms adjust sensitivity at minimum and pulse at mode 3 setting (factory default is mid range).

When adjustment is complete, tighten the PIR cover screw. For Eye-Spy II with swivel bracket, refer to figure 3; tighten the two adjustment screws.

**WARNING: Test this alarm product at least once a week.**

### Av-Gad Limited Warranty

Av-Gad Systems Ltd. and its subsidiaries and affiliates (“Seller”) warrant its products to be free from defects in materials and workmanship under normal use for 12 months from the date of sale.

Because Seller does not install or connect the product and because the product may be used in conjunction with products

not manufactured by Seller, Seller can not guarantee the performance of the security system which uses this product. Seller's obligation and liability under this warranty is expressly limited to repairing or replacing, at Seller's option, within a reasonable time after the date of delivery, any product not meeting the specifications.

SELLER MAKES NO OTHER WARRANTY, EXPRESSED OR IMPLIED, AND MAKES NO WARRANTY OF MERCHANTABILITY OR OF FITNESS FOR ANY PARTICULAR PURPOSE.

IN NO CASE SHALL SELLER BE LIABLE FOR ANY CONSEQUENTIAL OR INCIDENTAL DAMAGES FOR BREACH OF THIS OR ANY OTHER WARRANTY, EXPRESSED OR IMPLIED, OR UPON ANY OTHER BASIS OF LIABILITY WHATSOEVER.

Seller's obligation under this warranty shall not include any transportation charges or costs of installation or any liability for direct, indirect or consequential damages or delay.

Seller does not represent that its products may not be compromised or circumvented; that the product will prevent any personal injury or property loss by burglary, robbery, fire or otherwise; or that the product will in all cases provide adequate warning or protection.

Buyer understands that a properly installed and maintained alarm may only reduce the risk of burglary, robbery or fire without warning, but it is not insurance or a guarantee that such will not occur or that there will be no personal injury or property loss as a result. CONSEQUENTLY, SELLER SHALL HAVE NO LIABILITY FOR ANY PERSONAL INJURY, PROPERTY DAMAGE OR OTHER LOSS BASED ON A CLAIM THAT THE PRODUCT FAILS TO GIVE WARNING. HOWEVER, IF SELLER IS HELD LIABLE, WHETHER DIRECTLY OR INDIRECTLY, FOR ANY LOSS OR DAMAGE ARISING UNDER THIS LIMITED WARRANTY OR OTHERWISE, REGARDLESS OF CAUSE OF ORIGIN, SELLER'S MAXIMUM LIABILITY SHALL NOT IN ANY CASE EXCEED THE PURCHASE PRICE OF THE PRODUCT, WHICH SHALL BE THE COMPLETE AND EXCLUSIVE REMEDY AGAINST SELLER.

**No employee or representative of Seller is authorized to change this warranty in any way or grant any other warranty.**

**WARNING: This product should be tested at least once a week.**



## **Standards**



The EYS II Conforms to European Union (EU) Electro Magnetic Compatibility (EMC) Directive number 89/336/EEC (amended by 92/31/EEC & 93/68/EEC).

The CE mark indicates that this product complies with the European requirements for health, environmental, safety, and customer protection.

## **ESY II Specifications**

**Sensor:** Dual and Quad (Pet type) element

**Processor:** Digital ASIC with analog channel

**Operating Voltage:** 8.4 to 16V DC

**RF Immunity:** From 50kHz to 1GHz at 50V/m.

**Current:** 7 mA at 12 volts (with LED off)

**Alarm Contacts:** 0.1 amps @ 24V DC, N.C. (S. State)

**Tamper Contacts:** 0.5 amps @ 24V DC, N.C.

**Range:** 15 meters @ 20 ° C, 3 m high

**Size without swivel:** 7.7 x 6.6 x 3.9 cm (3.0 x 2.6 x 1.5“)

**Swivel Bracket Adjustment:**

Horizontal (tilt):  $\pm 25^\circ$  Vertical (pan):  $+5^\circ, -15^\circ$

**Optical Filtering:**

White light protection, pigmented lens

**Operating Temperature:** -10 to  $+50^\circ\text{C}$  ( $+14$  to  $+122^\circ\text{F}$ )

**Temperature Compensation:** Automatically

**Storage Temp. :** -20 to  $+60^\circ\text{C}$  ( $-4$  to  $+140^\circ\text{F}$ )

Eye-Spy II™ is a registered trademark of Av-Gad Systems Ltd.

©Av-Gad systems Ltd., EYE-SPY II, VER 4, 11/2008

<http://www.av-gad.com>